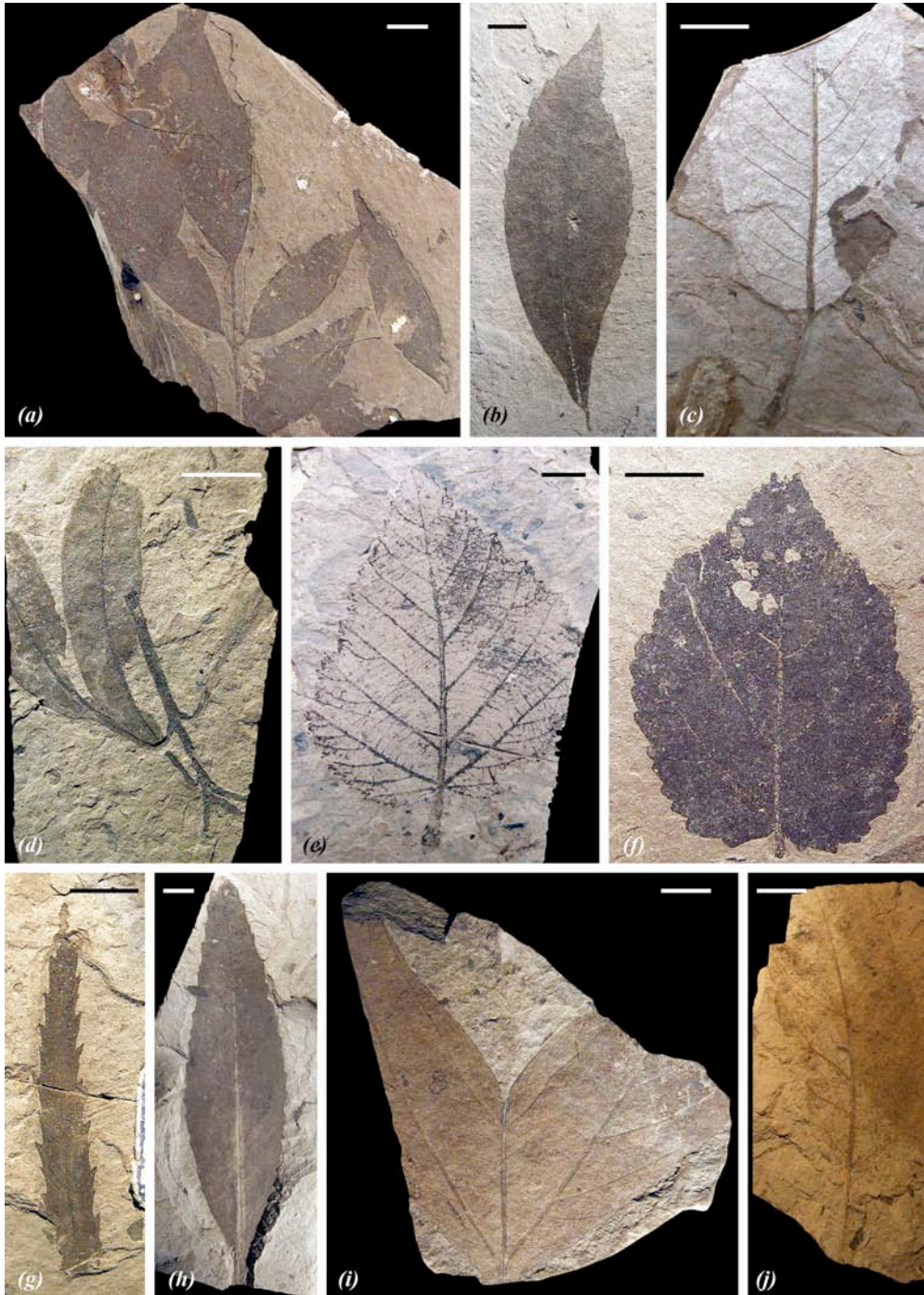


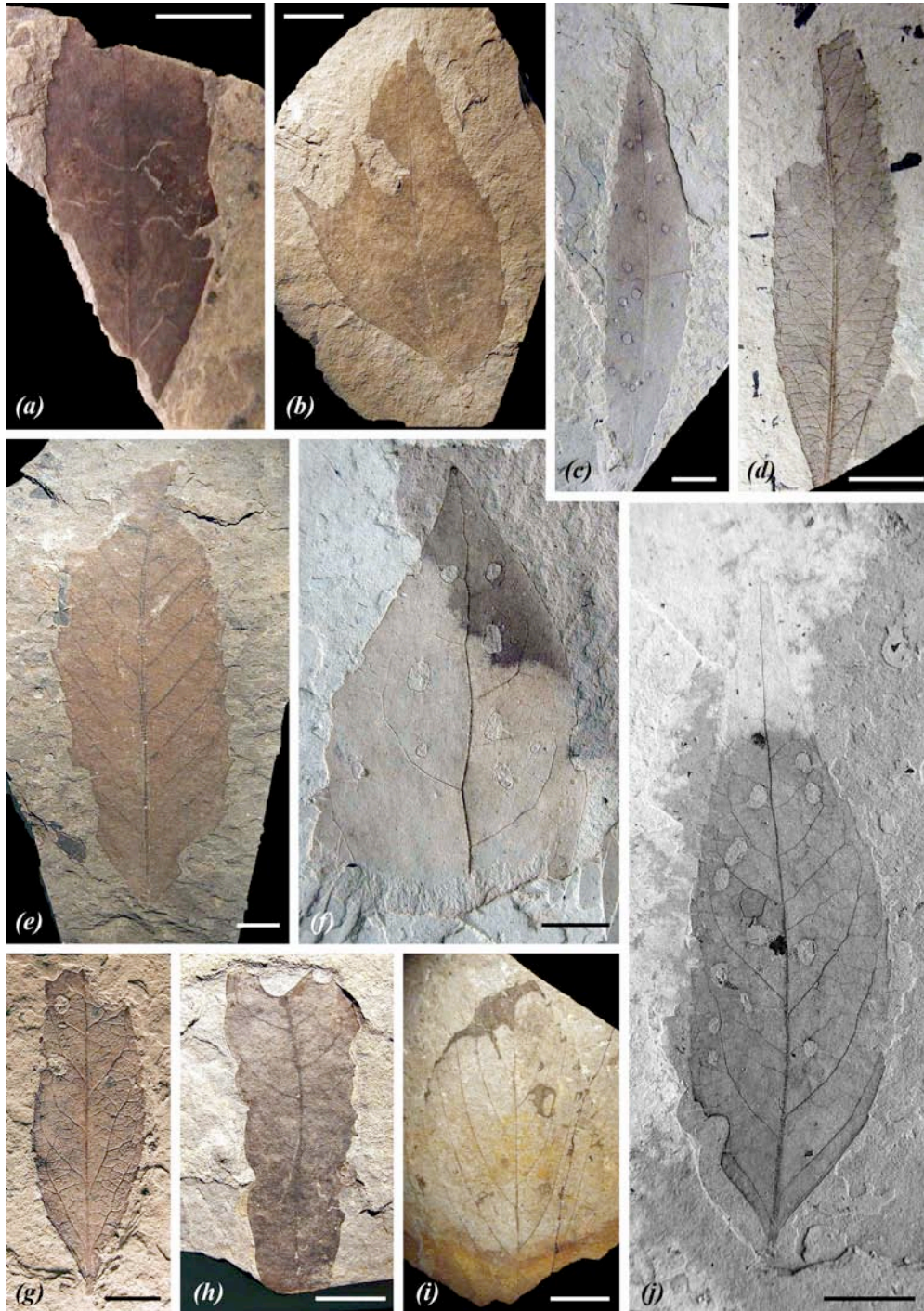
## **PLANT SPECIES FROM THE MENAT FLORA**

The following supplemental figures provide a selection of the floral richness at Menat (middle Palaeocene, France). Most of the plant species were described and named in the doctoral thesis of Louis-E. Piton (1940).

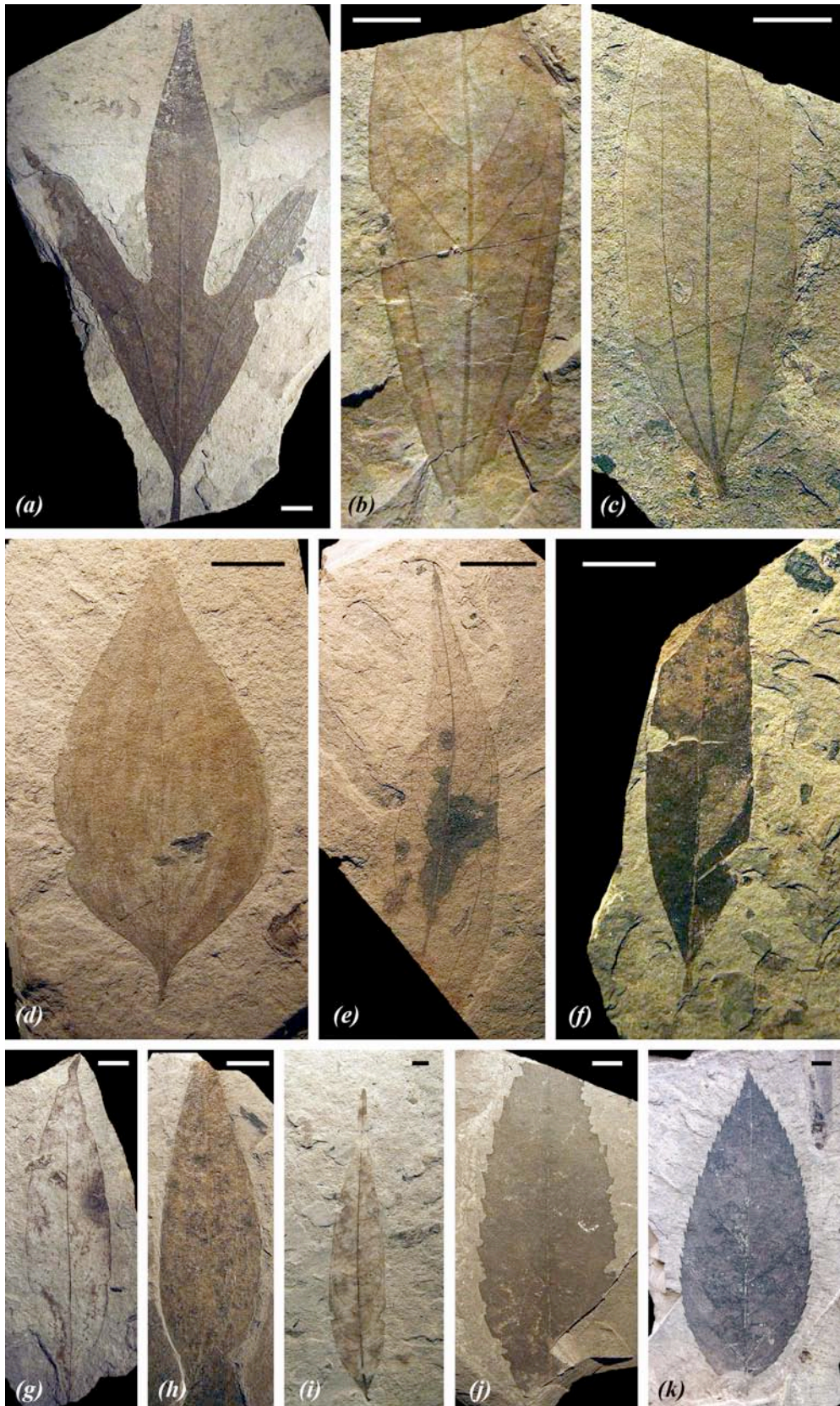
Collection numbers together with a damage type classification, if obvious, are in parentheses. An asterisk (\*) indicates figured specimens by Piton (1940). If the genus is in quotes, we suspect that, although the name is valid, the generic assignment is incorrect.



**Figure S2.** (a) “*Fraxinus*“ *articulata* (21285, DT 2, 12, \*); (b) “*Fraxinus*“ *agassiziana* (12657, DT 12); (c) “*Diospyros*“ *brachysepala* (15073); (d) *Cassiaphyllum berenice* (21298, DT 14, \*); (e) “*Corylus*“ *macquarrii* (20734, \*); (f) “*Corylus*“ *macquarrii* (21294, DT 2); (g) “*Myrica*“ *saportana* (20790, \*); (h) “*Myrica*“ *hakeaefolia* (12672, DT 16, 163); (i) Morpho-type II (21079, DT 2, 16); (j) “*Artocarpus*“ sp. (20490, DT 3). (Scale bars = 10 mm).



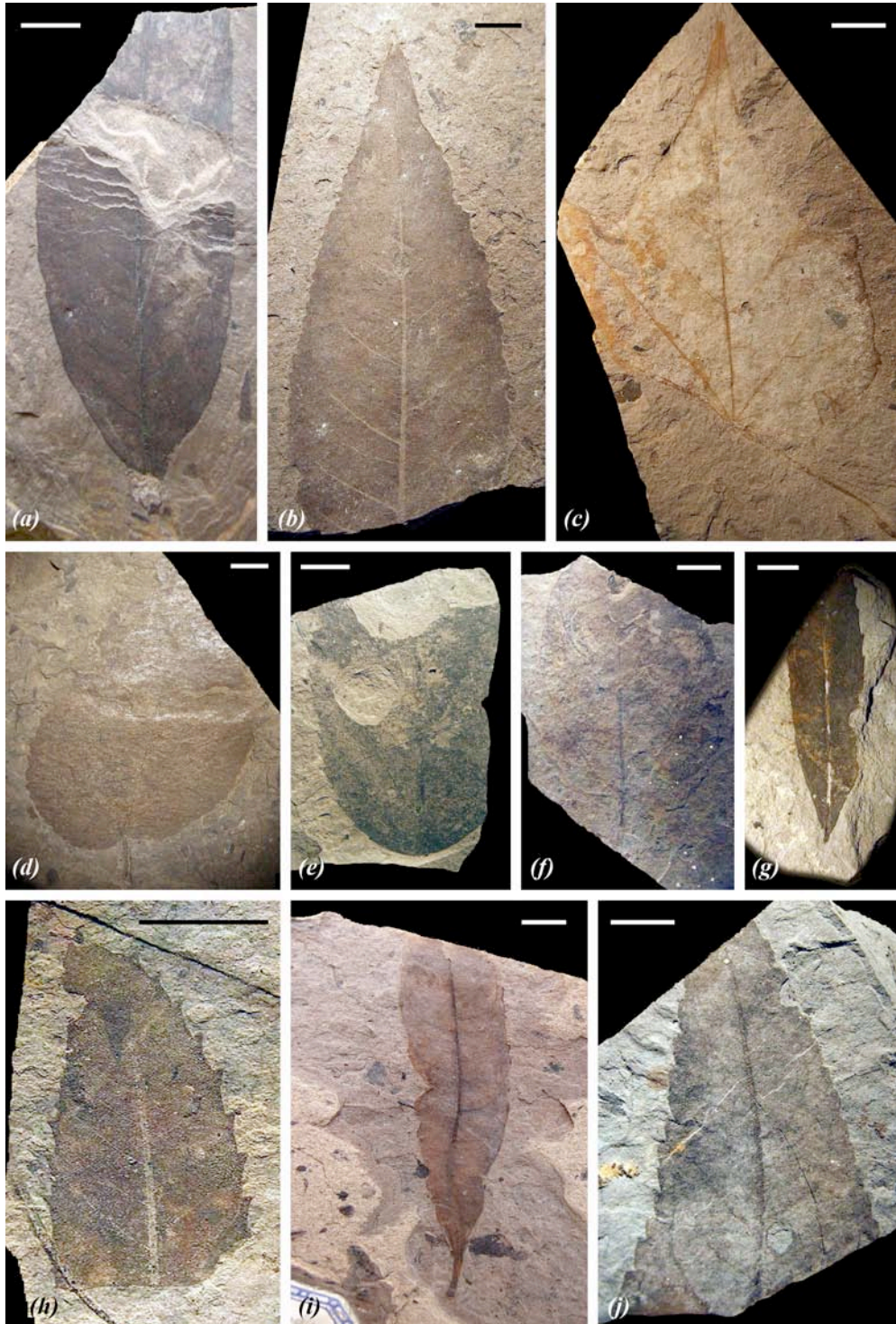
**Figure S3.** (a) “*Bignonia*“ *eocenica* (15079, DT 25); (b) “*Luheopsis*“ *vernieri* (21209, DT 15); (c) “*Salix*“ *lamottei* (MNT 06 2208, DT 12, 32); (d) “*Salix*“ *coriacea* (MNT 05 80, DT 3); (e) *Engelhardia*“ *orsbergensis* (16247.1, DT 2, 7); (f) Morphotype I (MNT 06 3493, DT 4, 12); (g) “*Zizyphus*“ *leuschneri* (MNT 05 125, DT 2); (h) “*Comptonia*“ *obtusiloba* (20789, DT 2, 4, \*); (i) “*Ceanothus*“ *azureus* (21056, DT 3, 16, \*); (j) Morphotype I (MNT 06 2290, DT 2, 12). (Scale bars = 10 mm).



**Figure S4.** (a) "*Lindera*" *trilobata* (12647, DT 2,3); (b) "*Lindera*" *stenolobata* (21283, DT 12, \*); (c) "*Cinnamomum*" *martyi* (21252, DT 2); (d) "*Cinnamomum*" sp. (12646, DT 12); (e) "*Actinodaphne*" *germari* (21324, DT 32, \*); (f) "*Laurus*" *praecellens* (20875, DT 12, 17); (g) Lauraceae sp. (20521, DT 12); (h) "*Daphnogene*" *lanceolata* (12643, DT 2); (i) "*Laurus*" *subprimigenia* (20871, DT 142, \*); (j) *Phyllites fraxiformis* (20493, DT 3); (k) aff. "*Fagus*" sp. (20709). (Scale bars = 9 mm).



**Figure S5.** (a) *Platanus schimperi* (12660, DT 14, 221); (b) *Platanus schimperi* (20711, \*); (c) “*Platanus*“ *trisecta* (12246.1, DT 163); (d) *Dryophyllum dewalquei* (21289, DT 15); (e) *Dryophyllum dewalquei* (21266, DT 12); (f) *Dryophyllum curticellense* (21277, DT 2); (g) “*Quercus*“ *lonchitis* (21300, DT 16, 25, \*); (h) “*Quercus*“ *parceserrata* (21212, DT 12, \*); (i) “*Quercus*“ *elaena* (21180, DT 14); (j) “*Protoficus*“ *crispans* (21322, DT 2); (k) “*Ficus*“ sp. (21270, DT 12, \*). (Scale bars = 9 mm).



**Figure S6.** (a) “*Prunus*“ *deperdita* (15072); (b) “*Populus*“ *balsamoides* (21144, DT 12, \*); (c) “*Acer*“ *loetum eocenicum* (21157, DT 15, \*); (d) “*Viburnum*“ *tilioides* (12682, DT 2, 12); (e) “*Tilia*“ *sylvestris* (21028, DT 4, \*); (f) *Byttnerophyllum tiliifolium* (21198, DT 2); (g) “*Ilex*“ *cassine* (20850, DT 12, 68, \*); (h) *Eotrigonobalanus furcinervis* (21282, DT 12); (i) “*Rhododendron*“ *celasence* (20719.1, DT 41, \*); (j) “*Cocculus*“ *kani* (21162, DT 2, 12). (Scale bars = 9 mm).

**Table S3.** Preserved figured specimens from Menat by L.-E. Piton from the Palaeobotanical Collection of the Muséum National d'Histoire Naturelle France. Plate and figure numbers refer to those in Piton (1940). Tragically, Muséum National d'Histoire Naturelle suffered, alongside millions of people and other cultural institutions, during the Second World War, and the collection was mostly destroyed, although some surviving specimens were scattered for safekeeping that are listed below.

Collection number	Plate	Fig.	Taxon
21321	I	2	„ <i>Bignonia</i> “ <i>eocenica</i>
20963	I	3	<i>Glyptostrobus europaeus</i>
21143	I	5	„ <i>Tilia</i> “ <i>sylvestris</i>
21036	I	6	<i>Pteris lonipennis</i>
20734	I	8	„ <i>Corylus</i> “ <i>macquarrii</i>
21324	I	9	„ <i>Actiodaphne</i> “ <i>germari</i>
21056	II	4	„ <i>Ceanothus</i> “ <i>azureus</i>
20946	II	8	„ <i>Podogonium</i> “ sp.
20850	II	9	„ <i>Ilex</i> “ <i>cassine</i>
20817	II	11	„ <i>Protoficus</i> “ <i>crispans</i>
21124	II	12	„ <i>Alsophila</i> “ <i>pomeli</i>
21285	III	4	„ <i>Fraxinus</i> “ <i>articulata</i>
21283	III	6	„ <i>Lindera</i> “ <i>stenoloba</i>
21234	III	7	Calice de „ <i>Diospyros</i> “ sp.
21233	III	9	Akène de „ <i>Sporangium</i> “ <i>stygium</i>
21179.a	IV	2	Feuille de „ <i>Quercus</i> “
21265	IV	5	„ <i>Aralia</i> “ <i>legitima</i>
21086	IV	9	<i>Pteris</i> cf. <i>aquilina</i>
21144	IV	10	„ <i>Populus</i> “ <i>balsamoides</i>
21125.b	IV	11	„ <i>Fontinalis</i> “ sp.
21153	V	1	„ <i>Viburnum</i> “ <i>tilioides</i>
21298	V	3	„ <i>Cassiaphyllum</i> “ <i>berenice</i>
21235	V	6	„ <i>Quercus</i> “ <i>provectifolia</i>
20713	V	7	Chaton de „ <i>Quercus</i> “
21314	V	8	„ <i>Actinodaphne</i> “ <i>germari</i>
20723	V	9	„ <i>Atriplex</i> “ <i>borealis</i>
21097	V	11	<i>Dryophyllum curticellense</i>
20789	VI	2	„ <i>Myrica</i> “ <i>obtusiloba</i>
20867	VI	2	„ <i>Ilex</i> “ <i>cassine</i>
21254	VI	3	„ <i>Breidelia</i> “ <i>lecoqui</i>
20870	VI	5	<i>Rhus pyrrhae</i>
20943	VI	6	„ <i>Cornus</i> “ <i>sanguinea</i>
20790	VI	7	„ <i>Myrica</i> “ <i>saportana</i>
21096	VI	8	„ <i>Myrica</i> “ <i>banksiaefolia</i>
21126	VI	9	„ <i>Dryandroides</i> “ <i>micheloti</i>
21155	VI	10	„ <i>Cocculus</i> “ <i>kani</i>
21035	VI	11	„ <i>Alsophila</i> “ <i>pomeli</i>
20740	VI	12	„ <i>Iris</i> “ cf. <i>pseudocoris</i>
21055	VII	2	„ <i>Rhamnus</i> “ <i>inaequalis</i>
20742	VII	4	„ <i>Nipadites</i> “ <i>burtini</i>
21019	VII	6	<i>Pinus coquandi</i>
20871	VII	9	„ <i>Laurus</i> “ <i>subprimigenia</i>
21257	VII	11	„ <i>Acer</i> “ <i>loetum eocenicum</i>

**Table S3.** *continued*

Collection number	Plate	Fig.	Taxon
20711	VIII	1	<i>Platanus schimperi</i>
21039	VIII	3	„ <i>Asplenium</i> “ <i>foersteri</i>
21246	VIII	4	„ <i>Salix</i> “ <i>lamottei</i>
21300	VIII	5	„ <i>Quercus</i> “ <i>lonchitis</i>
21113	VIII	7	„ <i>Quercus</i> “ <i>parceserrata</i>
20908	VIII	8	„ <i>Prunus</i> “ <i>depertita</i>
21132	IX	1	„ <i>Sorbus</i> “ <i>menatensis</i>
21011	IX	2	<i>Taxodium dubium</i>
21205	IX	5	„ <i>Lindera</i> “ <i>stenoloba</i>
21154	X	2	„ <i>Cocculus</i> “ <i>kanii</i>
20791	X	8	„ <i>Rhododendron</i> “ <i>celasence</i>
21268	X	10	<i>Dryophyllum laxinerve</i>
20903	X	12	„ <i>Copaifera</i> “ cf. <i>laxa</i>
21010	XI	2	<i>Pteris</i> sp.
20833	XII	1	„ <i>Quercus</i> “ <i>lonchitis</i>
20860.1-3	XII	2	„ <i>Corylus</i> “ <i>macquarrii</i> / „ <i>Fraxinus</i> “ <i>agassiziana</i> / <i>Glyptostrobus europaei</i>
21032	XII	3	<i>Pteris</i> sp.
20729	XII	5	„ <i>Artriplex</i> “ <i>borealis</i>
20736	XII	7	„ <i>Corylus</i> “ <i>macquarrii</i>
21033	XII	8	<i>Pteris urophylla</i>
21034	XII	12	<i>Pteris</i> sp.
21145	XIII	1	„ <i>Populus</i> “ <i>balsamoides</i>
20719.a	XIII	4	„ <i>Rhododendron</i> “ <i>celasence</i>
21270	XIII	9	„ <i>Ficus</i> “ <i>reussii</i>
21221	XIII	10	„ <i>Podogonium</i> “ <i>knorii</i>
20735	XIV	5	„ <i>Corylus</i> “ <i>macquarrii</i>
21028	XIV	8	„ <i>Tilia</i> “ <i>couloni</i>
21127	XV	2	„ <i>Ceratophyllum</i> “ cf. <i>submersum</i>
21016	XV	6	„ <i>Sporangium</i> “ <i>stygium</i>